



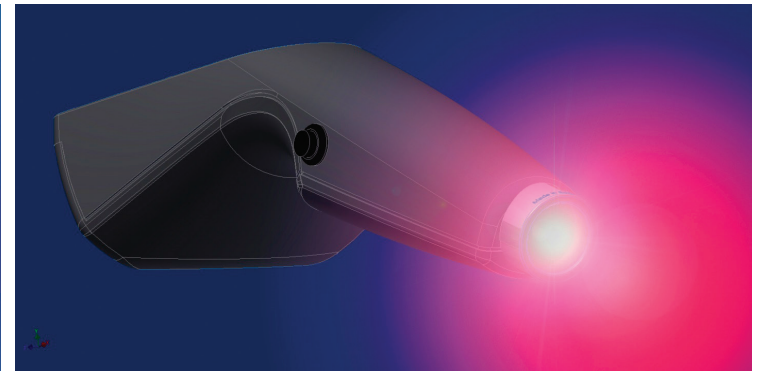
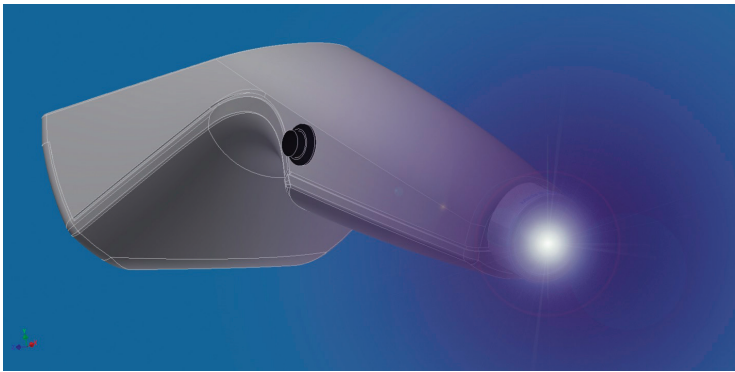
# cPLR TESTER

vision biomedical solutions



## What is cPLR Tester?

cPLR Tester is a unique diagnostic instrument for rapid screening of retina and optic nerve function using evaluation of the pupil light reflex after chromatic stimulation of rods, cones and melanopsin containing retinal ganglion cells (intrinsically photosensitive retinal ganglion cells – ipRGCs) with a red and blue light.

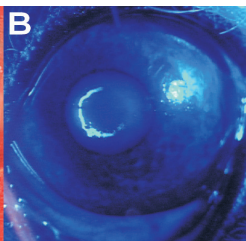
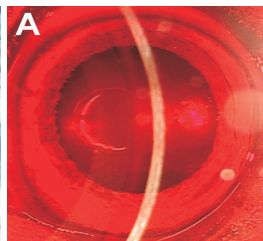


## cPLR Tester is a rapid screening device for retina and optic nerve diseases

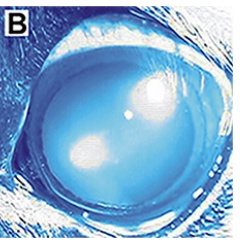
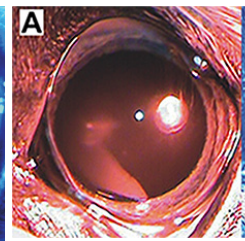
Testing procedure can be done within 30 seconds providing immediate information about functional status of the retina and optic nerve. Illumination with strong light source always results in the rapid and complete pupil constrictions. Lack of the pupil response after red light illumination, with normal response after blue light illumination is indicative of retinal disease (**NO RED – GOOD BLUE = RETINAL DISEASE**). Lack of the pupil response after red and blue light illumination is indicative of the optic nerve disease (**NO RED – NO BLUE = OPTIC NERVE DISEASE**).



Normal chromatic pupil light reflex response:  
**GOOD RED - GOOD BLUE**



Retinal disease chromatic pupil light reflex response:  
**NO (or poor) RED - GOOD BLUE**



**NO RED - NO BLUE**  
(optic nerve disease in a dog)

IN MANY PATIENTS ABNORMAL PUPIL RESPONSE TO CHROMATIC STIMULI (RED AND BLUE LIGHT) IS THE VERY EARLY SIGNS OF RETINA OR OPTIC NERVE DISEASE, WHICH CAN PRECEDE VISION PROBLEMS FOR MONTHS, ALLOWING IMMEDIATE THERAPEUTIC INTERVENTION.

## cPLR Tester \$900 + shipping




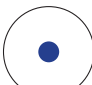




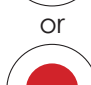
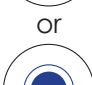





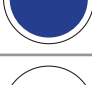
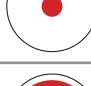

To purchased cPLR instrument contact

### Animal Eye Consultants of Iowa

Ph: 319-826-6217 | Ph: 1-860-IOWA-EYE (4692-393)

email: [animaleyeiowa@gmail.com](mailto:animaleyeiowa@gmail.com)

# Conditions which frequently cause vision and pupil light reflex abnormalities.

Condition	Menace/Vision		Dazzle	Pupil light reflex using cPLR Tester		ERG
				RED	BLUE	
SARDS	-	-	+			-
Immune-mediated retinitis	-/+	-/+	-/+			+
Retinal degeneration (hereditary)	-/+	-/+	+			+/-+
Chorio-retinitis/retinitis	-/+	-/+	+			-+
Retinal detachment	-/+	-/+	+	or 	or 	-+ -
Glaucoma (acute crisis)	-/+	-/+	-/+			-+
Optic neuritis/meningitis; pituitary tumor, chiasmal tumor	-	-	-			+
Brain tumor/visual cortex damage	-	-	+			+
Ophthalmoplegia interna/externa	+	+	+			+

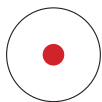
Legend: “+” present; “-” absent; “-/+” usually absent, but can be present; “-+” decreased;



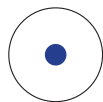
absent



absent



normal



normal



decreased



decreased  
with escape



decreased  
with escape

**escape – pupil initially constricts, then starts to dilate despite continuing illumination**

*\*Disclaimer - presented data present the most frequently observed pupil responses in different types of ocular diseases, however differences may exist between different patients due to individual patient variations, stage of disease or presence of multiple diseases affecting visual system simultaneously.*



animal-eye-iowa.com  
698 Boyson Road,  
Hiawatha, IA 52233

Ph: 319-826-6217  
Ph: 1-860-IOWA-EYE  
(4692-393)

animaleyeiowa@gmail.com  
Fax: 1-877-516-6277